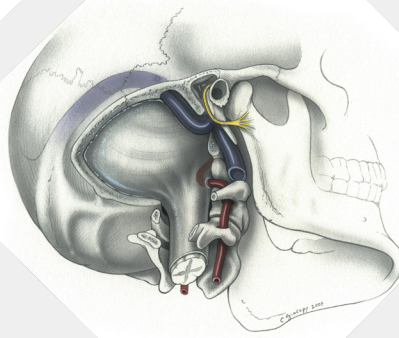




GHA
GLOBAL HEALTHCARE
ACADEMY



Cadaver Workshop

TEMPORAL BONE & ADVANCED OTOLOGY AND LATERAL SKULL BASE



**9-10
September
2025**



**JSS, Mysuru
India**



www.globalhealthcareacademy.in

COURSE OVERVIEW

Step into the intricate world of otologic and lateral skull base surgery with this comprehensive course led by renowned ENT and skull base surgeon, Dr. Bharathi. This hands-on cadaveric and theory-based program is designed to enhance your surgical precision in managing complex temporal bone pathologies. From mastoidectomy to advanced skull base approaches, the course equips you with the clinical and technical expertise required for high-stakes otologic interventions.

COURSE OBJECTIVES

- Understand the surgical anatomy of the temporal bone and lateral skull base.
- Demonstrate proficiency in performing various types of mastoidectomy.
- Identify and navigate critical structures during otologic and skull base procedures.
- Integrate diagnostic evaluation with surgical planning in advanced otology.
- Recognize indications, contraindications, and complications of lateral skull base surgery.

TOPICS COVERED

- Temporal Bone Surgical Anatomy & 3D Orientation
- Basic & Canal Wall-Up/Down Mastoidectomy Techniques
- Facial Nerve Identification & Preservation Strategies
- Cochlear Implantation: Surgical Techniques & Complication Avoidance
- Management of Cholesteatoma and Recurrent Disease
- Advanced Otology: Labyrinthectomy, Middle Ear Exploration
- Approaches to the Internal Auditory Canal
- Surgical Techniques for Jugular Foramen Tumors & Glomus Jugulare
- Endoscopic Approaches in Otologic Surgery
- Lateral Skull Base Approaches: Translabyrinthine, Retrosigmoid, and Middle Fossa
- Radiological Interpretation for Surgical Planning
- Decision-Making in Skull Base Tumors & CSF Leak Repairs
- Multidisciplinary Perspectives in Skull Base Surgery

LEARNING OUTCOMES

- Execute essential and advanced temporal bone surgical techniques
- Apply precise anatomical knowledge to clinical cases
- Anticipate and manage intraoperative complications in otologic surgery
- Improve technical performance and confidence in lateral skull base surgery
- Collaborate effectively in a skull base surgery team with enhanced surgical insight



LEARNING METHODOLOGY

- Didactic Lectures
- Cadaveric Dissection Lab
- Surgical Video Walkthroughs
- Interactive Case-Based Discussions



COURSE DIRECTOR

Prof. Dr. Bharathi M.B., MBBS, MS-ENT, DNB

Senior Consultant
ENT, Head & Neck & Skull Base Surgery,
JSS Hospital, Mysuru
Founder Member, Indian Academy of
Otorhinolaryngology and Head and Neck



COURSE FACULTY

Dr. Udayabhanu H.N., MBBS, MS-ENT

Consultant
ENT Skull Base Surgery
Manipal Hospital, Yelahanka,
Professor, ENT, AIMSRC
Fellow Skull Base Surgery, Italy

SCAN TO REGISTER





Contacts:



+91 8595926808



info@globalhealthcareacademy.in



www.globalhealthcareacademy.in